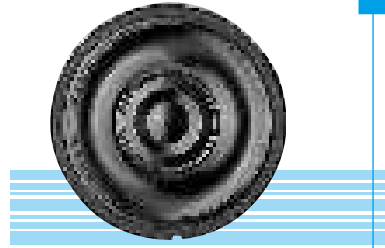
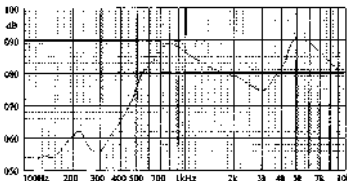


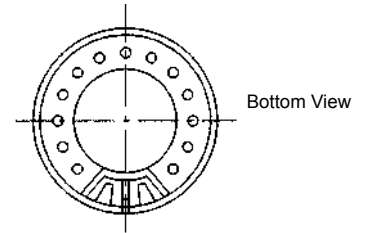
**KPSP2750MN SERIES**

**DIMENSIONS**

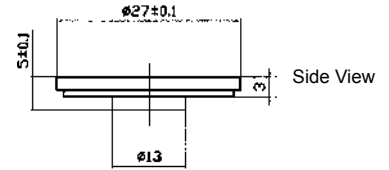
**FREQUENCY RESPONSE**  
[actual curve of type]



Metal Frame  
Inner Nd-Fe-B Magnetic



Bottom View



Side View

all dimensions are in mm

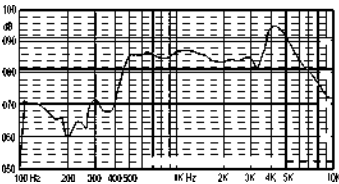
<b>Model No</b>	<b>KPSP-2750MN-08/0.25E</b>
Impedance	4, 8, 16, 32 (±15%)
Nom. / Max. Power	0.25W/ 0.5W
Resonant Frequency	650 ± 20%Hz
Frequency Range	fo-6000Hz
Sound Pressure Level	86 ± 3dB /0.1W at 10cm at 1KHZ
Magnetic size	9.5 × 1.5mm
Weight	5.0g

\* Value applying at rated voltage

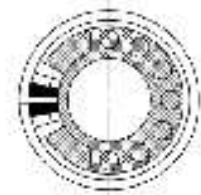
**KPSP2843MN SERIES**

**DIMENSIONS**

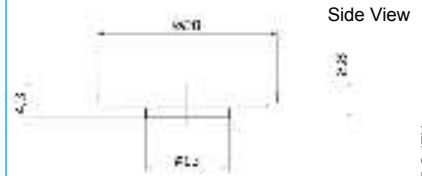
**FREQUENCY RESPONSE**  
[actual curve of type]



Metal Frame  
Inner Nd-Fe-B Magnetic



Bottom View



Side View

all dimensions are in mm

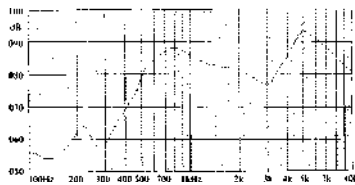
<b>Model No</b>	<b>KPSP2843MN-08 / 0.25A</b>
Impedance	4, 8, 16, 32 (±15%)
Nom. / Max. Power	0.25W/ 0.5W
Resonant Frequency	650±20% Hz
Frequency Range	f <sub>o</sub> - 3500Hz
Sound Pressure Level	85±3dB /0.1W at 10cm at 1KHZ
Magnetic size	9.5 × 1.5mm
Weight	5.0g

\* Value applying at rated voltage

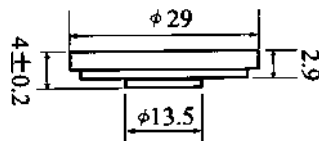
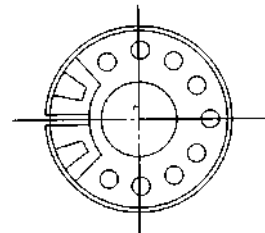
**KPSP2940MN SERIES**

**DIMENSIONS**

**FREQUENCY RESPONSE**  
[actual curve of type]



Metal Frame  
Inner Nd-Fe-B Magnetic



all dimensions are in mm

<b>Model No</b>	<b>KPSP-2940MN-8/0.25E</b>
Impedance	4, 8, 16, 32 (±15%)
Nom. / Max. Power	0.25W/ 0.5W
Resonant Frequency	600±20% (Hz)
Frequency Range	f <sub>o</sub> - 7500Hz
Sound Pressure Level	86±3dB /0.1W at 10cm at 1KHZ
Magnetic size	10 × 1.5mm
Weight	5.0g

\* Value applying at rated voltage

The information contained herein is believed to be correct, but no guarantee for accuracy, completeness KEPO Electronics Ltd. reserves the right to make changes without notification.